

Car Rally

KILLARNÉE 
TARGA
SOUTH WEST

TARMAC
EVENT
'11



on Closed Bitumen Roads in and around...

Pemberton & Manjimup

Killarnée Targa South West will once again bring bitumen road based rallying to the people of Pemberton and Manjimup, providing residents and spectators with the opportunity to watch some of the most exciting classic, sports and GT cars compete against the clock.

Killarnée Targa South West

www.targasouthwest.com.au

(08) 9324 4566

KILLARNÉE 
TARGA
SOUTH WEST **'11** TARMAC
EVENT

21-22 MAY 2011

PEMBERTON and the SHIRE of MANJIMUP



KILLARNÉE
CIVIL AND CONCRETE CONTRACTORS



LE PERFORMANCE
PRODUCTS
PTY LTD



SATURDAY 21 May 2011

Appealing Signs & Graphics

Big Brook Dam Spectator Point:
 Corner Mullineaux & Golf Links Road
 Enter Golf Links Road from North Pemberton Rd.
Road Closed: Saturday 8:00am - 12:55pm
Cars on Stage: Saturday 9:06am - 11:55am

Shannons Insurance

Gloucester Road Spectator Point:
 Eastbourne & Gloucester West Cross Roads
 Enter Eastbourne Rd from Southwest Hwy
Road Closed: Saturday 10:46am - 4:12pm
Cars on Stage: Saturday 11:49am – 1.00pm
 and again Saturday 2.00pm – 3.05pm

Appealing Signs & Graphics

Kurandra Road Spectator Point:
 Corner Mullineaux & Golf Links Road
 Enter Golf Links Road from North Pemberton Rd.
Road Closed: Saturday 2:18pm - 5:30pm
Cars on Stage: Saturday 3:21pm – 5:02pm

Shire of Manjimup

Manjimup Town Stage Spectator Point:
 Corner Giblett and Rose Streets
Road Closed: Saturday 2:36pm - 5:30pm
Cars on Stage: Saturday 3:39pm - 5:19pm

SUNDAY 22 May 2011

LF Performance Products

Pemberton Town Stage Spectator Point:
 Either side of Brockman Rd behind the safety barriers
Road Closed: Sunday 9:00am - 12:59pm
Cars on Stage: Sunday 10:03am - 11:59am

LF Performance Products

Pemberton Town Stage Spectator Point:
 Corner of Widdeson & Guppy Sreets

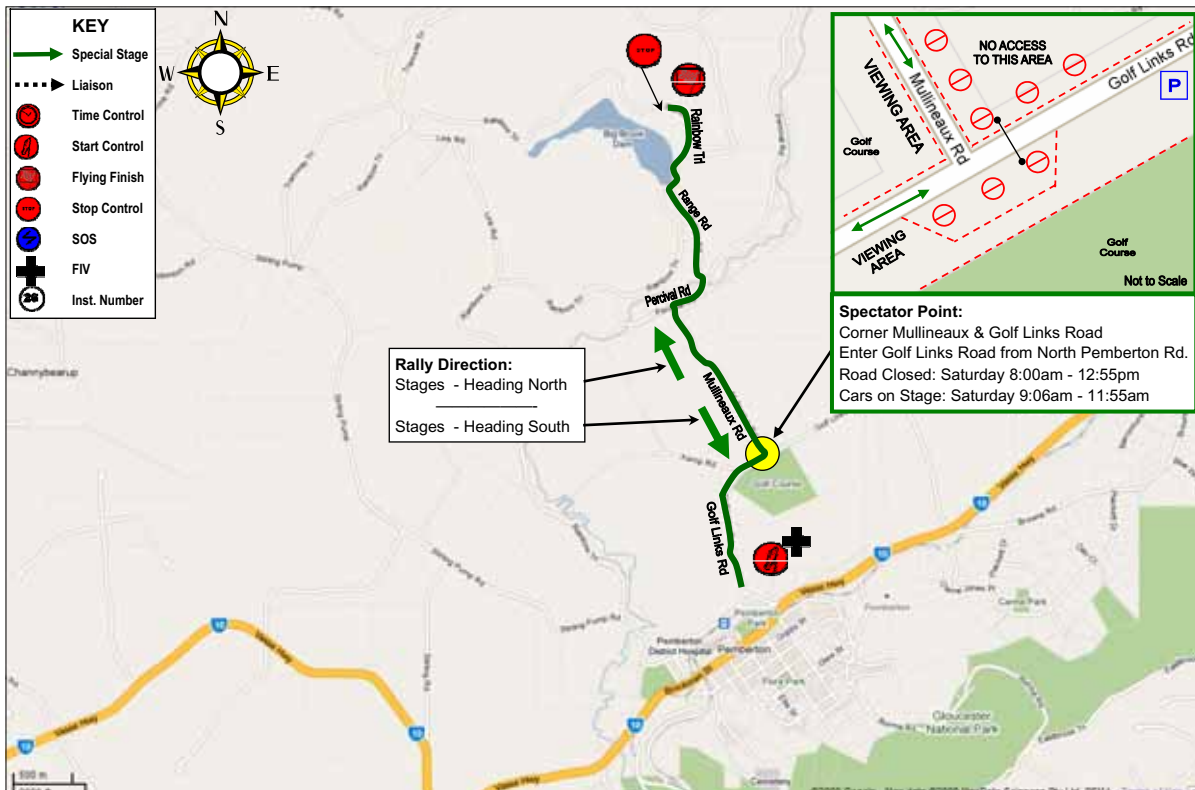
LF Performance Products

Pemberton Town Stage Spectator Point:
 Corner of Dean & Guppy Streets



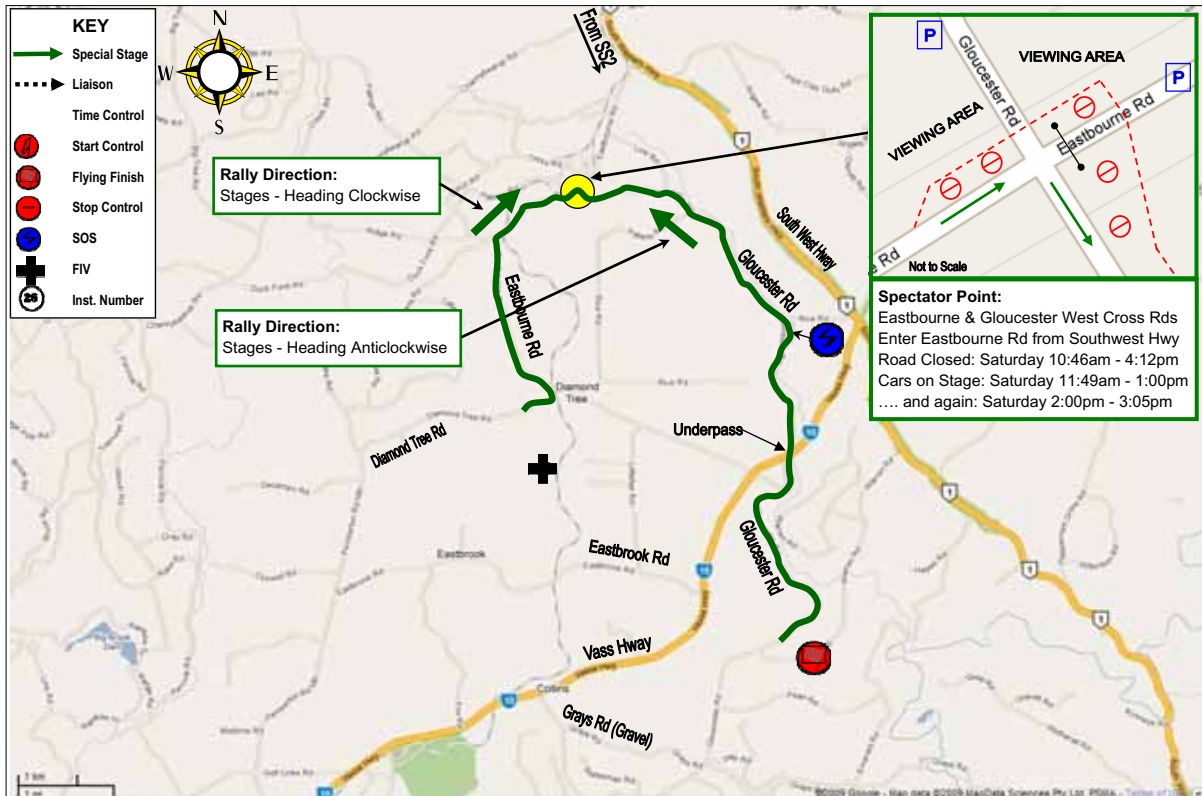
Big Brook Dam Special Stage

This stage will be run twice in each direction
Roads Closed Saturday Morning 21 May
8:00am to 12:55pm

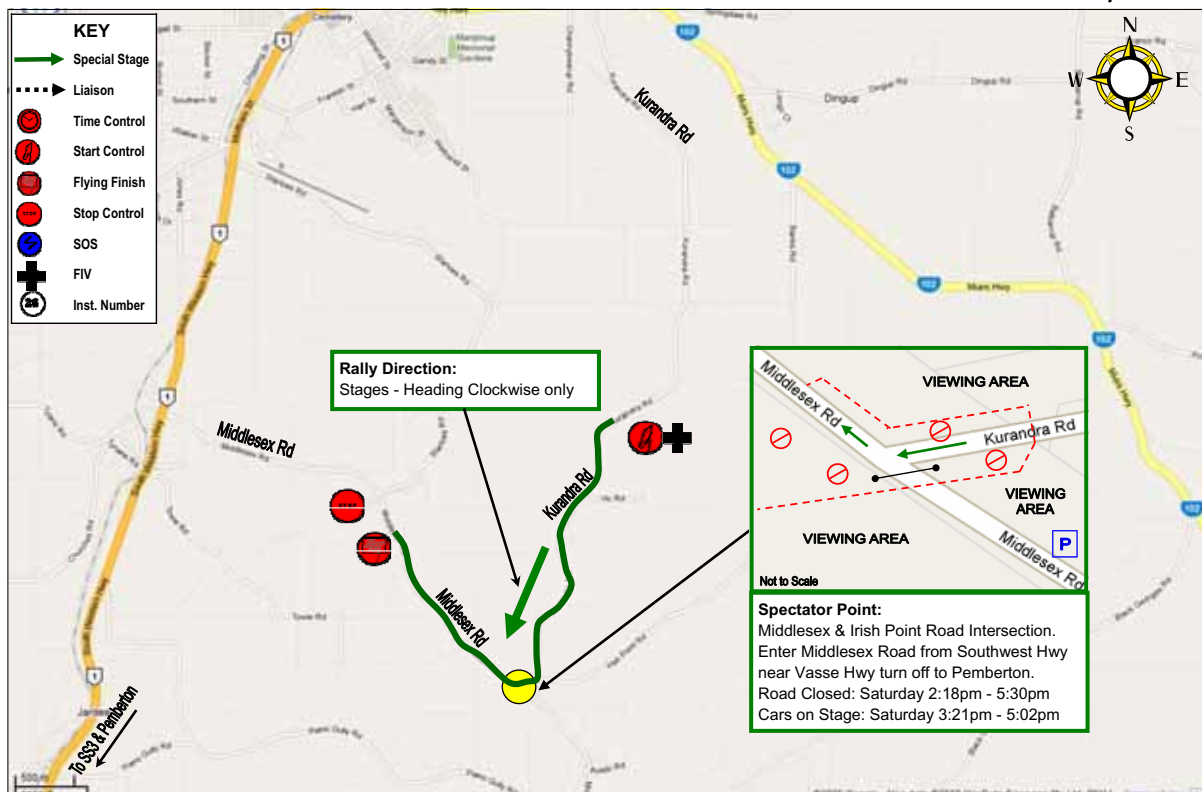




Gloucester Special Stage
 This stage will be run twice in each direction
 Roads Closed Saturday 21 May
 10:46am to 4:12pm

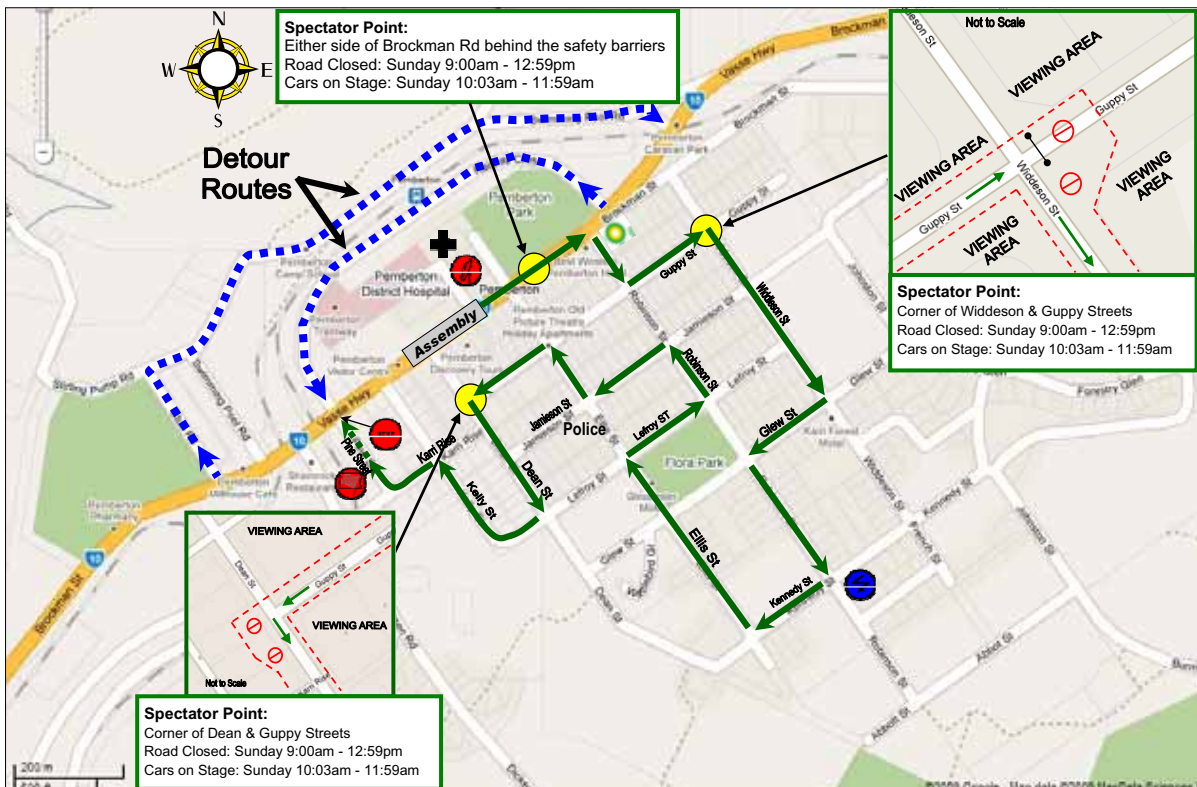


Kuranda Special Stage
 This stage will be run 3 times
 Roads Closed Saturday Afternoon 21 May
 2:18pm to 5:30pm





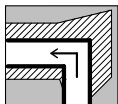
Manjimup-Bridgetown Times



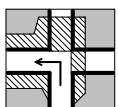
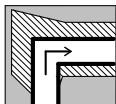


THE FOLLOWING DIAGRAMS SHOW AREAS THAT ARE CONSIDERED TO BE UNSAFE

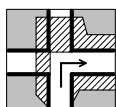
NO STANDING AREAS ARE SHOWN WITH STRIPES



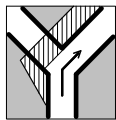
LEFT OR RIGHT CORNER



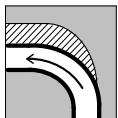
LEFT OR RIGHT AT CROSSROADS



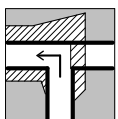
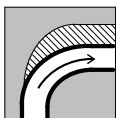
LEFT OR RIGHT AT CROSSROADS



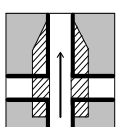
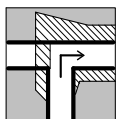
LEFT OR RIGHT HAIRPINS



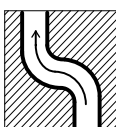
LEFT OR RIGHT SWEEPERS



LEFT OR RIGHT T-JUNCTIONS



CROSSROADS AND ESSES/ CHICANES



Use this guide to ensure safe viewing in areas outside designated spectator points

SPECTATING SAFELY

DON'T...

- Stand on the road
- Stand below the level of the road
- Sit close to the road
- Stand in front of fences or objects preventing you from moving quickly
- Stand in front of signs or arrows
- Remove rally signs or arrows
- Be distracted

ALWAYS...

- Stay ALERT and expect the unexpected
- Stand in a safe location
- Listen for approaching cars
- Remain alert
- Leave yourself room to move quickly
- Keep children under supervision
- Obey rally officials
- Help the officials to run a safe stage

BE SURE THAT...

- The unexpected can happen

PLEASE PROTECT...

- Yourself
- Others around you
- Other people's property
- Wildlife and flora

SAFETY IS OUR #1 PRIORITY

STAGE CLOSURE AND OPENING

Killarnée Targa South West has permission from the local government authority and the Commissioner of Police to close the roads for competition. All roads, gates and driveways leading onto the rally stage need to be closed off by manning, taping and tagging.

To ensure the safety of the public, officials and the crews the following procedure will take place.

- Before the road closure time, unused gates will be tagged.
- At the road closure time the roads will be closed and officials will begin to tape and tag all driveways and gates.
- Before the rally starts each stage, **Official Car 000**, will inspect that all roads, gates and driveways have been closed.
- **Official Car 00** will then check that all officials and the public are in a safe location.
- A few minutes before the stage starts, **Official Car 0**, with flashing lights and sirens will be a warning that the stage is about to begin.
- The Challenge Category (cars without roll cages) will start competing.
- After the Challenge Cars, the Competition Rally Cars will then compete.
- They will be followed by the medical team, Official Car FIV, to check on the safety of the stage.
- Once all competition is finished, **Official Car SWEEPER** with a **GREEN FLASHING Light** will then traverse the stage notifying Officials to open up roads, driveways, gates and remove Chicanes from the road.
- The road will then be opened to the public.

MOTORSPORT IS DANGEROUS

CAMS and its Associated Entities including Targa West exclude all liability for you harm howsoever arising from your attendance / participation at the event except to the extent prohibited by law. For the full disclaimer wording, refer to the website at...

www.targasouthwest.com.au

EMERGENCY CONTACT

In the case of a life threatening EMERGENCY call... **000**

RALLY CONTACT

Contact Killarnée Targa South West at any time on **(08) 9324 4566**

During the event the Rally HQ number is

0419 045 042